

RIVERBEND TIMBER FRAMING

CATTAIL LODGE



Size: 2,312 sq. ft.

Bedrooms: 3

Bathrooms: 2 1/2

“This overview represents general information on this Riverbend home plan; however, photos and illustrations may depict some level of customization.”

RIVERBEND TIMBER FRAMING

Blissfield, Michigan
Calgary, Alberta

800.486.BEND

www.riverbendtf.com

Charming details and an efficient use of space make the Cattail Lodge a perfect year-round home or family getaway.

The home's central foyer features a vaulted ceiling and front stairway that rises to the bridge hallway above. Ahead lies the great room, which offers ready access to a deck that spans the entire width of the house, providing plenty of outdoor living space. Flanking the great room are the kitchen and large dining area with bay window and owners' suite with its private access to the deck. A screened porch, complete with its own fireplace, allows the party to spill outdoors even in chilly weather.

Upstairs, the bridge hallway offers aerial views of the dining room, great room and foyer, and connects bedrooms two and three. The second-story bedrooms both get extra character from their dormer ceilings, and are served by their own full bath.

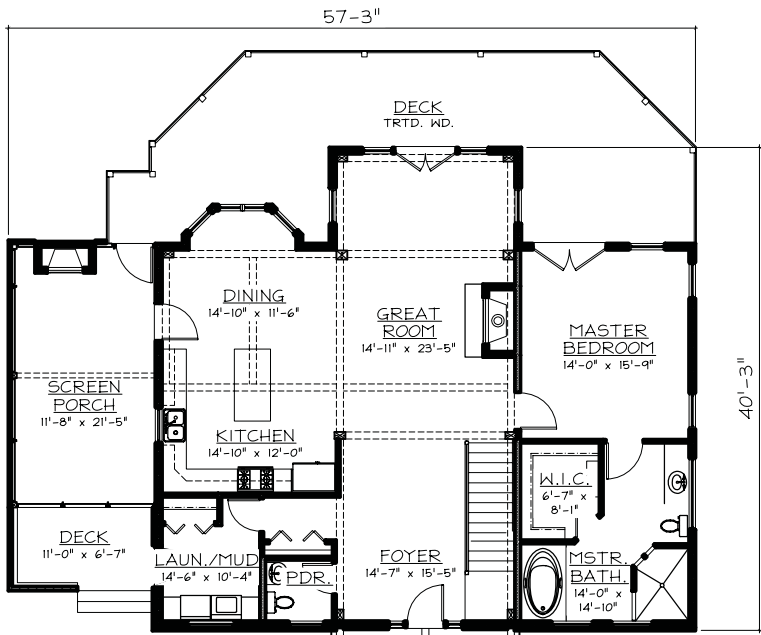
Your dream home is just around the Bend.



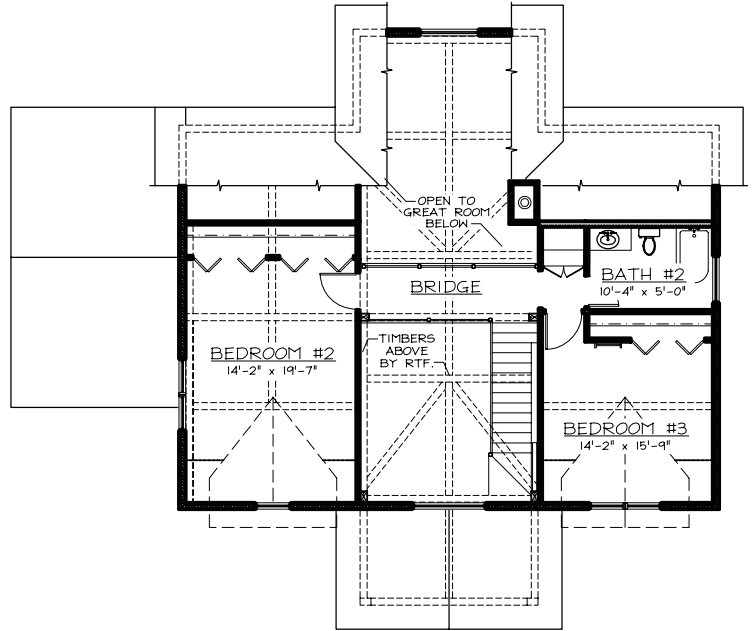
Riverbend
TIMBER FRAMING

Better building ideas from PFB™

CATTAIL LODGE



FIRST FLOOR PLAN
1,594 S.F.



SECOND FLOOR PLAN
718 S.F.

